

Nikon

Browser Software for
COOLPIX Digital Cameras

Nikon View Ver.3 for Macintosh

Reference Manual

Overview

Setting Up the Camera Drive

Working with Image Files

Nikon View Browser

Nikon View Reference

 **Click**
to go



Welcome to Nikon View Ver.3 for Macintosh (below, “Nikon View”), browser software for the COOLPIX 990/950/800/700/900 series (below, “[COOLPIX digital] camera(s)”). NikonView allows you to connect your camera to a Macintosh for quick retrieval and browsing of the image files stored in your camera’s memory card. Once NikonView is installed on your Macintosh, the camera can be used like any other drive, allowing free access to image files in the camera’s memory card via standard Mac OS file operations. NikonView Browser is also provided, making it possible to display the contents of the camera’s memory card as thumbnail images. Once you have installed Nikon View and mastered its simple operation, you’ll be able to distribute your digital image files by disk or electronic mail, or include them in your home page and other documents you create for business or personal use.

Nikon View’s features include those listed below.

- camera drivers for the COOLPIX digital cameras, which allow you to connect your camera to either the USB port or the modem/printer port (SC-EM3 cable sold separately) of your computer and access its memory card in much the same way as you would an ordinary disk drive

- thumbnails viewed in NikonView Browser can be copied to disk or opened in other applications using drag-and-drop operations
- image files in the camera’s memory card can be handled using standard Mac OS file operations
- photographs can be opened in any application that supports JPEG or TIFF for retouching or to be saved in another format, allowing you to use photographs as desktop pictures or distribute them with electronic mail
- movie files can be played in any application that supports Apple QuickTime movie format
- if you have a compact flash-memory card reader or a PCMCIA card slot and card adapter, the camera’s compact flash-memory cards can be browsed even when not inserted in the camera



Terminology used in this manual

A new feature of Nikon View Ver.3 is its ability to support movie files created with the COOLPIX 990 digital camera. As you read this *Reference Manual*, keep in mind that most functions introduced apply to both still image files and movie files. Where this is the case, “image file(s)” will be used to refer to both types of files. Specific references to “still image(s)” or “photograph(s)”, or “movie(s)” apply only to the file type mentioned.



This manual will guide you, step-by-step, through the process of using Nikon View with your COOLPIX digital camera. For details on Nikon View installation and system requirements, refer to the *Quick Start Guide*.

The Manual Layout

The contents of each chapter are outlined below.

Overview

Describes Nikon View's features and outlines the contents of this manual

Setting Up the Camera Drive

Explains how to mount and unmount the camera

Working with Image Files

Explains how to access image files stored in the camera's memory card, open them in other applications for editing, and copy them to disk

Nikon View Browser

Describes how to display image files as thumbnails, view image files, and copy them to disk using Nikon View Browser

Nikon View Reference

A handy reference guide to Nikon View's windows and menus

With Different Operating Systems

The illustrations and explanations in this manual are for Mac OS 8.6. Display and operation may differ slightly in other versions of Mac OS. Refer to the system software manual for the version you are using.

Working Knowledge

This manual assumes a basic understanding of common Mac OS operations. If you are in doubt about the meaning of terms used here, refer to your Mac OS manual.



Printing this manual

For ease of reference, this *Reference Manual* can be printed using the **Print...** command in the Adobe Acrobat Reader **File** menu.



To make it easier to find the information you need, the following symbols and conventions are used:

About

A table of contents appears on the first page of the *Reference Manual*. In addition, each chapter begins with an outline of the topics covered. Click on the heading to open the *Reference Manual* to the indicated chapter or section.



Click this icon at the bottom right corner of each page for an explanation of the symbols and conventions used in this manual.



Blue text indicates a link to another part of this *Reference Manual*. To follow the link, click the blue text.



This icon signifies the need for caution when using the product. These indications are placed in sections that should be read before operation to prevent damage to the product.



This icon marks notes, information that you should read before using your camera.



This icon marks tips, additional information you may find helpful when using your camera.



This icon marks references to other documentation or to another part of this manual.



This icon marks short-cuts.



Setting Up the Camera Drive

Once you have installed the NikonView software as described in the *Quick Start Guide*, you can mount the camera. The mounted camera drive icon is displayed on the desktop, just as with any other drive. This chapter describes how to mount the camera, choose settings, and unmount the camera.

Mounting the Camera from a USB Port

Mounting the Camera from a Modem/Printer Port

Camera Drive Settings

Unmounting the Camera

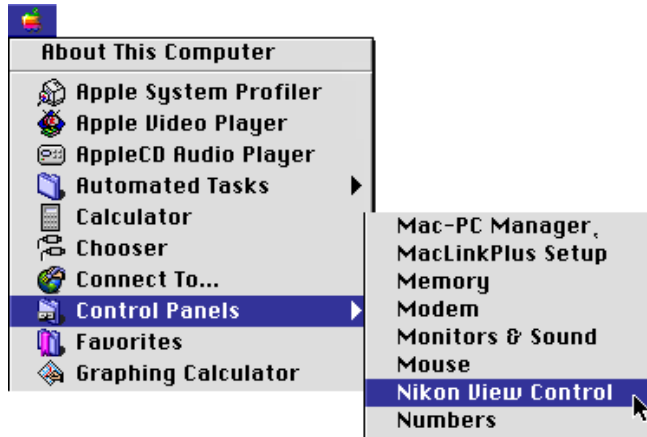
Notes on Using the Camera as a Drive



Mounting the Camera from a USB Port

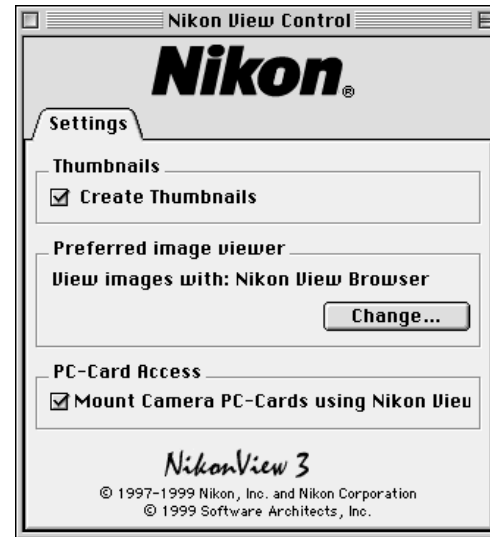
Follow these steps to mount your camera as a drive from a USB port.

- 1 Choose **Nikon View Control** from the **Control Panels** submenu of the Apple menu ().



Select **Open Nikon View Control...** from the Nikon View item menu on the control strip. The Nikon View Control window will be displayed.

- 2 The following window will be displayed (if the CoolPix panel is displayed, click the **Settings** tab to switch panels).



Nikon View Control Settings

You can make changes to the following settings:

- if the **Create Thumbnails** box is checked, thumbnail previews of the image files in the camera's memory card will be created when the camera is first connected as a drive.
- the application used to open photographs (the default is the built-in viewer in Nikon View Browser)
- alternate drives, mounting card readers or PCMCIA card adapters in place of the camera

After making changes to settings, close the dialog box.

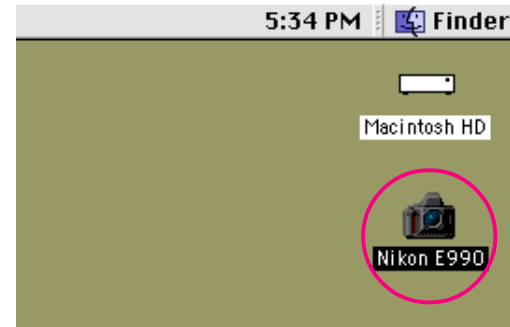


3 Connect the camera to the USB port on your Macintosh, as described in the documentation provided with your COOLPIX digital camera.

The camera will be mounted automatically if:

- The computer is running
- Nikon View has been properly installed
- The camera is on
- A compact flash-memory card is inserted in the camera

When the camera is mounted, the **Nikon E990** camera icon will appear at the right side of the desktop, along with the icons for other drives.



✓ Caution!

The borders of the shutter-speed/aperture display in the camera's control panel flash on and off in a "marching ants" marquee while the computer communicates with the camera. The display continues for up to sixty seconds after the transfer of data is complete. Do not disconnect the camera until the borders of the display stop flashing. (The data-transfer display varies according to your camera model.)



Data-transfer display
(COOLPIX 990)



For more information on:

[Setting Up the Camera Drive: Camera Drive Settings](#)



If you are mounting the camera using the settings in effect during the previous session, you do not need to open the Nikon View Control window. If you change settings while the camera is mounted, these changes will be applied the next time you mount the camera.

Connection Error

If Nikon View is unable to locate the camera, an alert dialog will appear. After clicking **OK** in the dialog, check the following points:

- Have the camera and computer been connected as described in the documentation provided with each?
- Are both camera and computer on?
- Has a memory card been inserted in the camera?
- Are the camera's batteries inserted correctly?
- Are the batteries exhausted or dead?
- If you are using the AC adapter (sold separately), is it properly connected?
- Is the camera the only peripheral connected to the USB port?

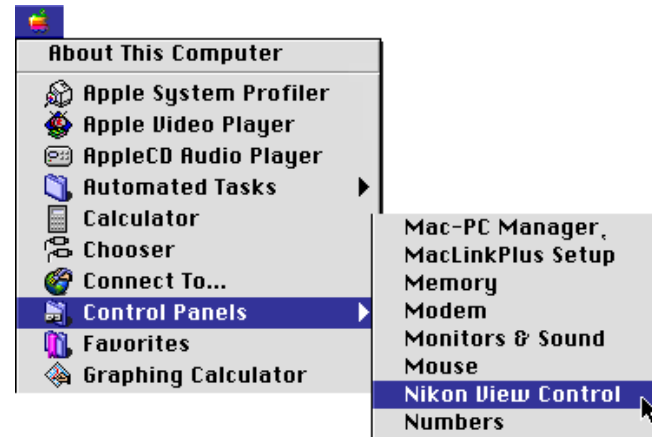
Refer to the ReadMe file for the latest information on connection errors.

Mounting the Camera from a Modem/Printer Port

(SC-EM3 cable sold separately)

Follow these steps to mount your camera as a drive from your computer's modem/printer port.

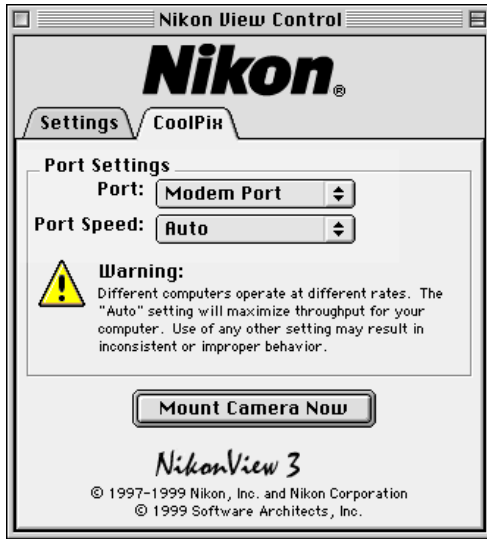
- 1 Connect the camera to your Macintosh as described in the documentation provided with your COOLPIX digital camera.
- 2 After turning on your Macintosh, choose **Nikon View Control** from the **Control Panels** submenu of the Apple menu ().



Select **Open Nikon View Control...** from the Nikon View item menu on the control strip. The Nikon View Control window will be displayed.



- 3 From the **Port** option pop-up menu, choose the appropriate connection port (**Modem Port** or **Printer Port**).



Setting Port Speed

The data-transfer rate used when the camera is connected to the computer via the modem/printer port can be selected from the **Port Speed** option pop-up menu. Choose **Auto** to have Nikon View automatically select a speed suited to your Macintosh.

Setting camera drive options

The following options are available:

- if the **Create Thumbnails** box is checked, thumbnail previews of the image files in the camera's memory card will be created when the camera is first connected as a drive.
- the application used to open photographs (the default is the built-in viewer in Nikon View Browser)
- alternate drives, mounting card readers or PCMCIA card adapters in place of the camera



For more information on:

[Setting Up the Camera Drive: Camera Drive Settings](#)



Depending on your set-up, auto data-rate detection may not perform as expected. Should you experience problems reading the data stored in the camera, select a new speed in the CoolPix panel. If you still experience difficulties at the highest available rate, choose successively lower speeds until you find one that works.



PowerBook users who have connected the camera to the printer/external modem port should turn AppleTalk off and then select Modem Port in the Port option.

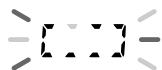
- 4 Once any changes to settings have been made, click **Mount Camera Now** to mount the camera.

The following message will be displayed while the computer mounts the camera.



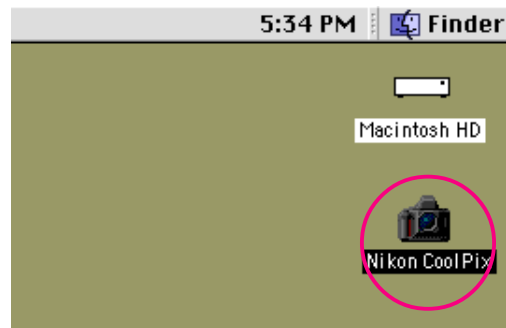
✓ **Caution!**

The borders of the shutter-speed/aperture display in the camera's control panel flash on and off in a "marching ants" marquee while the computer communicates with the camera. The display continues for up to sixty seconds after the transfer of data is complete. Do not disconnect the camera until the borders of the display stop flashing. (The data-transfer display varies according to your camera model.)



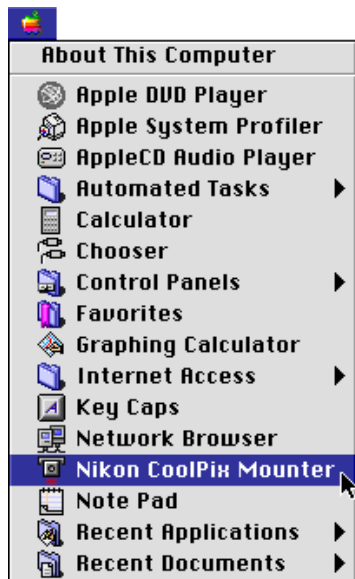
Data-transfer display
(COOLPIX 990)

Once the camera has been mounted as a drive, the **Nikon CoolPix** camera icon will appear at the right side of the desktop, along with the icons for other drives.



Mounting the camera without changing port or settings

Once you have connected the camera using the Nikon View Control window to specify connection port and other settings, the Nikon CoolPix Mounter can be used to mount the camera, applying the settings that you last chose in the Nikon View Control window. To connect directly to the camera, choose Nikon CoolPix Mounter from the Apple menu (🍏).



From the Nikon View item menu on the Control Strip, choose **Mount Camera Now**.

Connection error

If Nikon View is unable to locate the camera, an alert dialog will appear. After clicking **OK** in the dialog, check the following points:

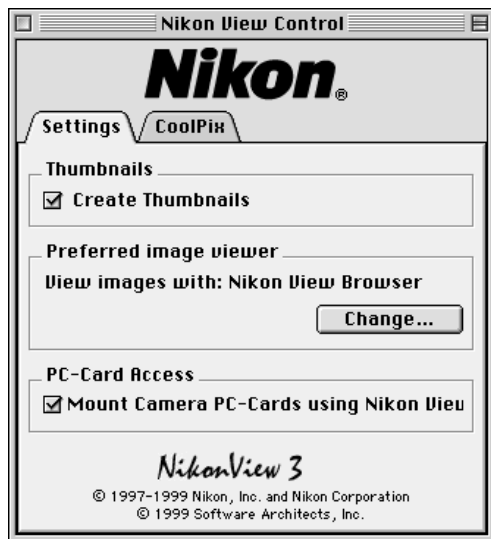
- Have the camera and computer been connected as described in the documentation provided with each?
- Are both camera and computer on?
- Has a memory card been inserted in the camera?
- Are the camera's batteries inserted correctly?
- Are the batteries exhausted or dead?
- If you are using the AC adapter (sold separately), is it properly connected?

Refer to the ReadMe file for the latest information on connection errors.

Camera Drive Settings

You can choose camera drive settings when you mount the camera.

The following window will be displayed (if the CoolPix panel is displayed, click the **Settings** tab to switch panels).



The following settings can be adjusted from the Settings panel.

Creating thumbnail icons

If the **Create Thumbnails** box is checked, thumbnail previews of the image files in the camera's memory card will be created when the camera is first connected as a drive. When you open the image folder in the mounted camera drive, image files are displayed as thumbnail icons. These thumbnails will be displayed in **Nikon View Browser** (see below), and in the Open dialog box when viewing image files on the camera drive.

Assigning the application used to open photographs

You can choose the application used to open photographs browsed with Nikon View. The application used by default is NikonView Browser (the built-in viewer). You can also choose a third-party host application to open photographs. Movie files will be opened with QuickTime Player regardless of Nikon View Control settings.

the application used to open photographs



To use a different application, click the **Change...** button. In the dialog that appears, navigate to a folder containing an application that supports the photograph formats used by the camera (JPEG or TIFF). Select the application and click **Open**.

With the COOLPIX 900 connected through the modem port, and modem speed set to AUTO, you can not delete files or format the PC card.

Mounting card readers or PC card adapters

When the **Mount Camera PC-Cards using Nikon View** check box is selected, you can read compact flash-memory cards from a flash-memory card adapter or from a flash-memory card reader. If a card containing image files recorded with a COOLPIX digital camera is inserted in either device, you can browse its contents with Nikon View. The memory card will be mounted as the Nikon Digital Camera drive and you can complete image file operations just as when you mounted the camera.

If the **Mount Camera PC-Cards using Nikon View** check box is not selected, the following icon will be displayed on your Macintosh's desktop when the memory card containing image files recorded with a COOLPIX digital camera is mounted.

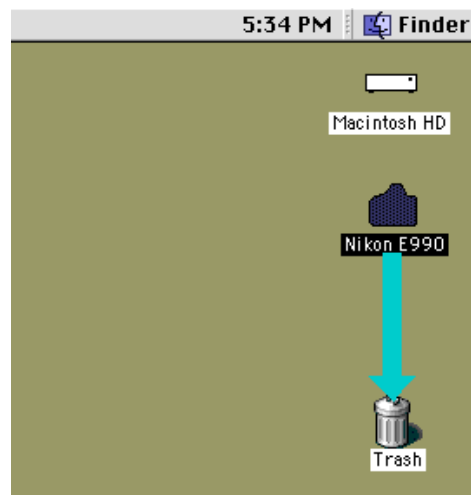


Unmounting the Camera

When you turn off your Macintosh, the camera will be unmounted automatically. To unmount the camera without turning off the computer, use one of the methods explained below.

Drag the camera icon to the Trash

The camera can be unmounted by dragging the camera icon to the Trash.



Camera drive folders will close and the camera icon will disappear from the desktop.



Click the camera icon then select **Put Away** (⌘Y) from the **File** menu.

Alternative USB unmounting and remounting

Unmounting the camera

The camera will be unmounted automatically if you do any of the following:

- Turn the camera off
- Remove the memory card from the camera
- Disconnect the USB cable

When the camera is unmounted, the folders containing image files recorded by the camera will close. Drag the camera icon to the Trash.

Remounting the camera

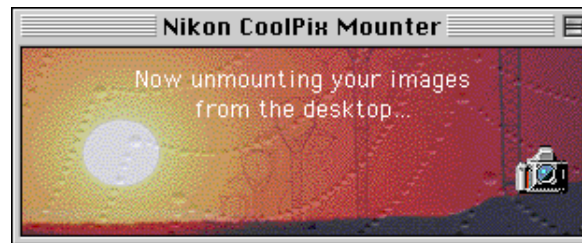
The camera will be remounted if you do any of the following:

- Turn the camera off and then on
- Remove and reinsert the memory card
- Disconnect and reconnect the USB cable

Alternative modem/printer port unmounting

Select **Nikon CoolPix Mounter** from the Apple menu ().

The following message will be displayed.



Camera drive folders will close and the **Nikon CoolPix** icon will disappear from the desktop.

Alternatively, you can choose **Nikon View Control** from the **Control Panels** submenu of the Apple menu () and click **Unmount Now** in the Nikon View Control window.



Select **Unmount Camera Now** from the Nikon View item menu on the Control Strip.

Notes on Using the Camera as a Drive

Nikon View allows the camera's memory card to be used in much the same way that you would use any other drive. Note, however, that certain limitations apply as listed below.

Only one camera is supported at a time:

Even if two or more cameras are connected, only one camera can be mounted at any one time. If you are using a USB port, the first camera to be recognized by the computer will be the one that is mounted. If you are using both the modem and printer port, you can switch between cameras using the Nikon View Control window.

The camera can not be shared over a network:

The camera will not function as a network drive. Consequently the camera icon will not be visible to other computers.

The camera's memory card is "read-only":

The camera's memory card functions as a "read-only" volume when mounted as a disk, so that files can not be copied to the camera's memory card, nor can files be saved to the memory card after being edited in another application. Should you wish to change a file name, do so after copying the file to the hard disk. Once a file has been changed in any way, it can not be copied back to the image folder in the camera drive. (**New Folder** and **Duplicate** in the **File** menu are enabled for the camera volume. However, you can not create new folders or duplicate files on the camera's memory card.)

Once the camera is connected as a drive, as described in the previous sections, you can use the camera's memory card with Nikon View in much the same way that you would use any other drive under Mac OS. This chapter describes how to copy image files captured with a COOLPIX digital camera to disk, and how to open them for editing in other applications. These operations are much the same as standard Finder operations; consult your Mac OS manual for details.

Browsing Image Files

Copying Image Files to Disk

Deleting Image Files from the Camera

Opening Image Files in Another Application



Browsing Image Files

Follow these steps to view image files stored in your camera's memory card.

- 1 Double-click the camera icon at the right side of the desktop.



(The camera name varies depending on the connection type.)

Folder Names

When displayed in Nikon View, folders created with the camera are prefixed by a three-digit folder number. Thus the default folder, which, when viewed from the camera menus, has the name “NIKON,” is displayed in Nikon View as “100NIKON”. Each folder can hold up to 999 images. If this number is exceeded, the camera will create a new folder with the same name but a different prefix (e.g., “101NIKON”). When viewed on a computer, folders with the same name but a different prefix appear as separate folders. When viewed from the camera menus, however, folders with the same name appear to be the same folder, although the full folder name with prefix appears in the photo information display in playback mode.

The camera window opens, and folders saved in the camera's memory card are displayed.



When the camera functions as a drive, it is treated as a “read-only” disk. Files can not be copied or saved to the camera. Similarly, the Finder commands **New Folder**, **Duplicate**, and **Make Alias** can not be used on the camera or the image files it contains. Even if you choose to display image files as a list or as buttons from the Finder's **View** menu, this information will not be saved, and image files will again be viewed as icons the next time you mount the camera.



- 2 Double-click the folder icon that you want to browse.
The image files in the selected folder will appear as thumbnails icons.



Image files can be copied to disk or opened for editing in another application using standard Finder operations, as described in the following sections.

✓ *Caution!*

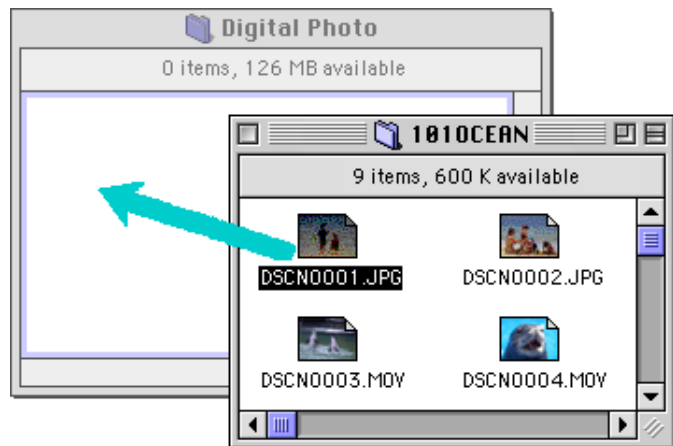
Do not try to replace an image file on the camera's memory card with another image file with the same name. Even if you click **OK**, the file can not be overwritten, but will be erased from the memory card.



The ReadMe file in the camera window contains important information for using NikonView. This ReadMe file can be deleted by dragging the file into the Trash. Once deleted, the file is permanently erased from the camera window. If, after deleting the ReadMe file, you would like to review the information provided there, drag the **Nikon View Preferences** file (found in the path "System Folder > Preferences > Nikon View Preferences") to the Trash and restart your computer.

Copying Image Files to Disk

Before copying image files to disk, locate or create the destination folder. To copy image files to disk, select the image files you wish to copy by clicking their icons (you can select multiple files by holding down the **shift** key while clicking each image file in turn), then drag any of the selected icons over the destination folder and release the mouse button.



Because the camera functions as a “read-only” volume, image files can only be copied from the memory card to disk, not moved, even if the **option** key is not held down.



All image files captured with the camera are assigned file names in numerical order beginning with “DSCN0001.JPG” (or “.TIF” or “.MOV”). Likewise, all image files saved in folders in the camera’s memory card are assigned file names in numerical order beginning with “DSCN0001.JPG” (or “.TIF” or “.MOV”). Thus, to prevent overwriting when copying an image file to disk, change the filename after copying the file, or create a new folder for each camera folder.



Deleting Image Files from the Camera

Image files can be deleted from the camera's memory.

Image files can be deleted by dragging their associated thumbnails over the Trash icon and releasing the mouse button.

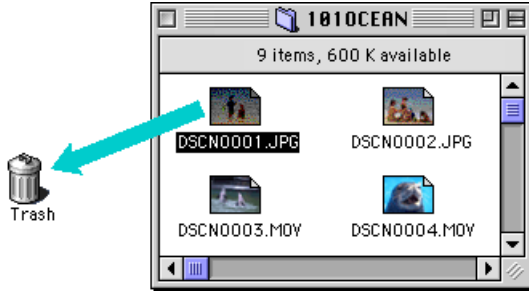
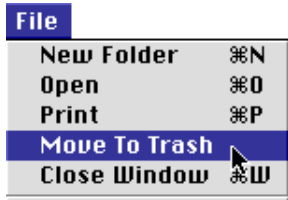
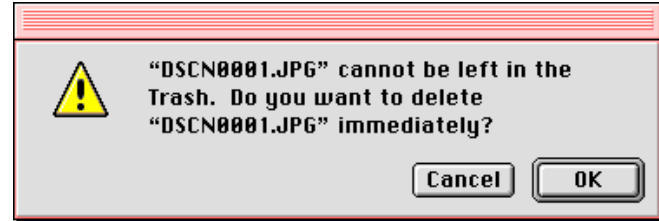


Image files can be deleted by selecting their thumbnails in the browser window and choosing **Move to Trash** from the **File** menu.



When image files in the camera are dropped into the Trash, an alert dialog will appear. If you click **OK**, the file will be permanently deleted without being stored temporarily in the Trash.



To delete all image files stored in the camera's memory card, you can initialize the disk. To do this, select the camera icon on the desktop, and then choose **Erase Disk** from the **Special** menu. If you click the **Erase** button in the confirmation dialog box which appears, the camera's memory card will be initialized and all data stored in the memory card will be permanently erased.

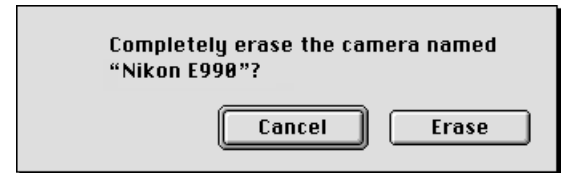
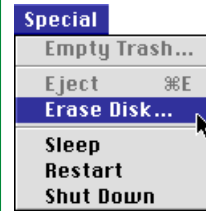


Image files are permanently deleted in this way, so be sure to verify the image file being deleted before carrying out this step.



Opening Image Files in Another Application

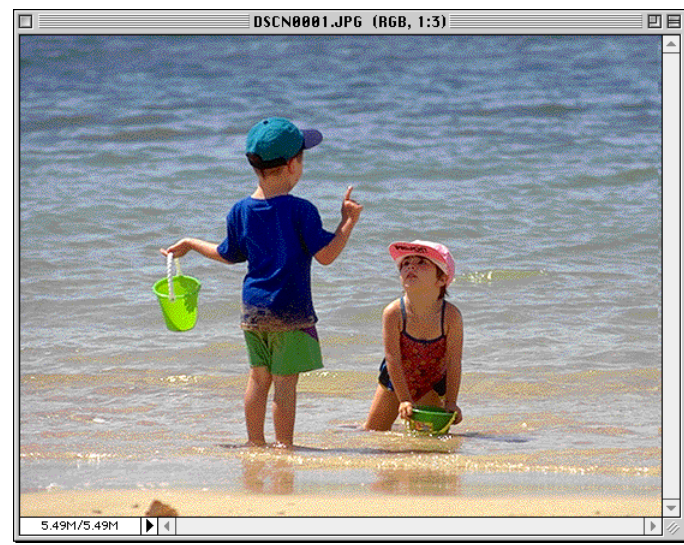
Image files can be opened in the host application by either double-clicking the image file icon or by choosing the icon and selecting **Open** from the Finder's **File** menu. Image files can also be opened directly from any application that supports the file formats (JPEG or TIFF for photographs and QuickTime for movies) used by the camera.

Opening selected image files from the image folder

To open image files, click the icon of the image file you wish to open (multiple image files can be selected by holding down the **shift** key while clicking each image file in turn), then double-click any one of the selected thumbnails. You can also choose **Open** from the **File** menu after selecting the image file(s) you want to open.



The application will start and the selected image file(s) will be opened in windows within that application.

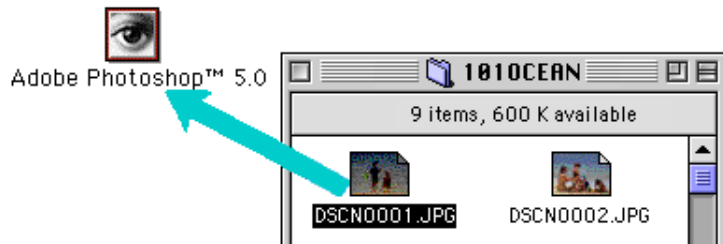


The application used to open photograph is the one that you selected in the Nikon View Control window's Settings panel when you mounted the camera. If you selected the default, Nikon View Browser, it will start, and you can view photographs at full resolution. If you chose another application, that application will start, and open the photographs. If the specified application is not installed when you attempt to open an image file, a dialog will appear prompting you to choose the application to be used. Choose a suitable application from the dialog box. To view photographs, the application must support JPEG and/or TIFF formats. If you double-click ".MOV" format files, the host application is QuickTime Player regardless of Nikon View Control settings.



Opening selected image files using drag-and-drop

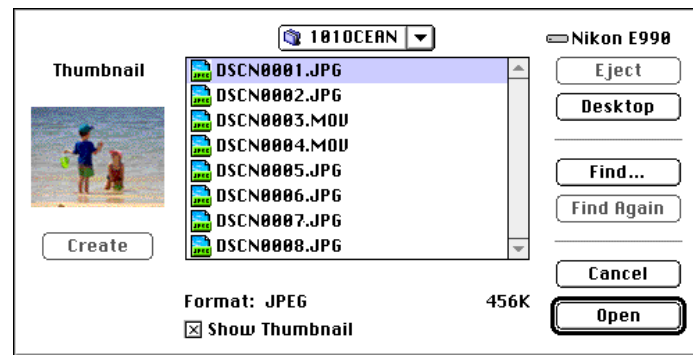
You can open selected image files in any application that supports the file formats used by the camera by dragging their thumbnails over the application's icon or alias and releasing the mouse button.



The application will start and the selected image files will be opened in windows within the host application.

Opening image files from the application's Open dialog

Image files in the camera can be opened from any application that supports the file formats used by the camera by choosing **Open...** or **Open File...** from the application's **File** menu. In the Open dialog, navigate to the Desktop, select the camera drive, and click the **Open** button. The folders in the camera's memory card are displayed; choose the one you want and click the **Open** button. The image files in the selected folder will be listed. If the application's Open dialog supports preview display, a preview of the image file currently selected will appear in the dialog box.



Select the image file you wish to open and click the **Open** button to open the image file in the host application.

Previews are only displayed in the Open dialog box if the **Create Thumbnails** item in the Nikon View Control window was checked when the camera was mounted.

NikonView Browser is an application that allows you to browse the image files in the camera's memory card as thumbnail previews. It also incorporates many Finder functions, making it easy to copy or open image files while previewing them. This chapter describes how to browse image files using NikonView Browser, how to display image files in the browser's built-in viewer, how to copy image files to disk, and how to open image files for editing in other applications.

Browsing Image Files From Your Camera

Browsing Image Files From a Card Reader

Browsing Image Files on Disk

Selecting Image Files

Viewing Photographs with the Built-in Viewer

Playing Movies

Deleting Image Files

Printing Photographs

Changing the Appearance of Thumbnails

Viewing Image File Information

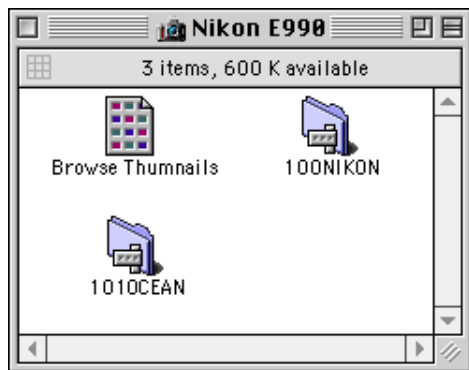
Copying Image Files to Disk

Opening Image Files in Another Application

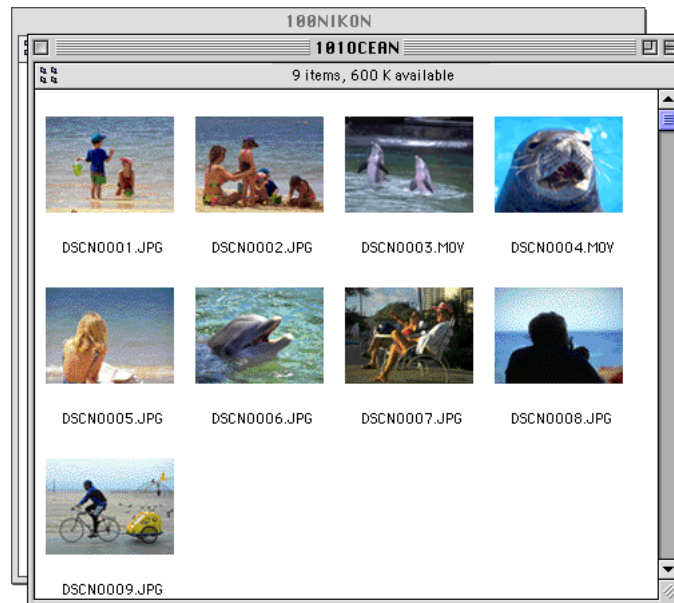


Browsing Image Files From Your Camera

To start Nikon View Browser and view thumbnail previews of the image files in the camera's memory card, double-click the **Browse Thumbnails** icon in the camera window.



The browser windows for all folders in the camera memory card will open and the image files will appear as thumbnails.



From the browser window, still images can be viewed at full resolution, printed, copied or deleted. In addition, movie files can be played, copied or deleted. These operations are detailed in the sections that follow.

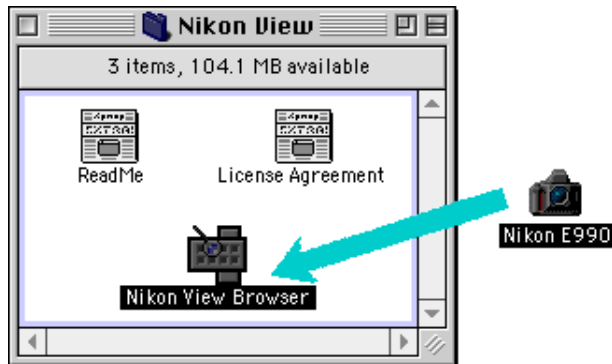
The **Browse Thumbnails** icon is only visible if the **Create Thumbnails** item in the Nikon View Control window was checked when the camera was mounted.

You can select image files using the **tab** key or the arrow keys.

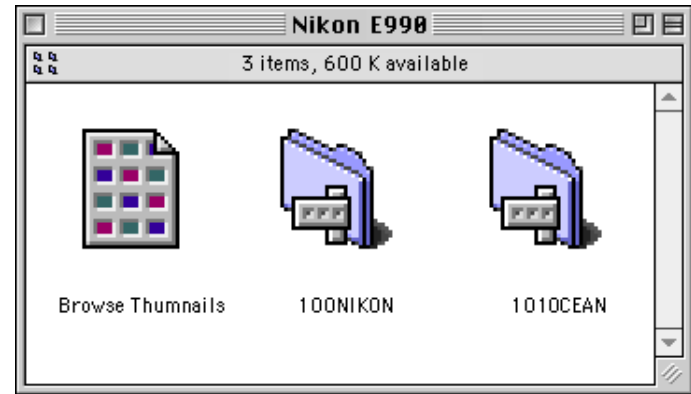
Another way of starting Nikon View Browser

Follow these steps to start Nikon View Browser and view thumbnail previews of the image files in the camera's memory card.

- 1 Drag the camera icon over the **Nikon View Browser** icon and release the mouse button.



The camera window opens, and folders saved in the camera's memory card are displayed.



- 2 Double-click the folder icon that you want to browse. Nikon View Browser will start, and the browser window will show thumbnail previews of the image files in the selected folder.

NikonView Browser can also be started by double-clicking the **Nikon View Browser** icon.



A dialog will appear prompting you to select a folder to browse. Navigate to the desired folder and click **Select**.

NikonView Browser may be found in the path (Installation Disk) > (Installation Folder) > Nikon Software > Nikon View > NikonView Browser.

Browsing Image Files From a Card Reader

If your computer has a Type II PCMCIA card drive, you can read compact flash-memory cards using a flash-memory card adapter (available separately from Nikon), or by using a compact flash memory card reader. If a card containing image files captured with a COOLPIX digital camera is inserted in either device, you can browse its contents with Nikon View.

After inserting the card in a card slot or card reader, follow these steps to browse image files stored on a compact flash-memory card.

- 1 Double-click the drive icon on the desktop (**Mount Camera PC-Cards using NikonView** check box not selected).



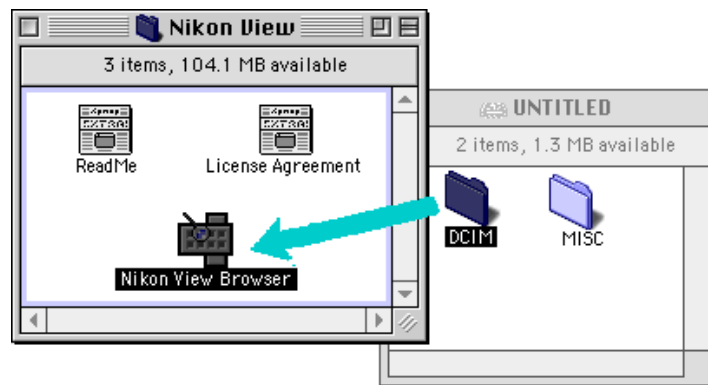
The drive window will open on the desktop.



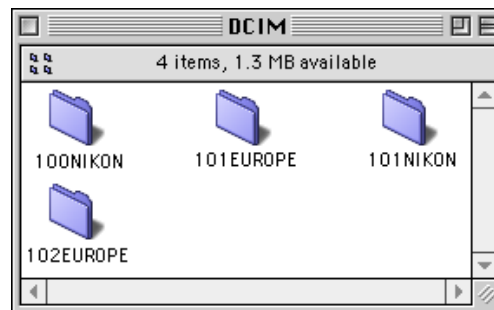
If a compact flash-memory card reader or card drive is mounted as the Nikon Digital Camera drive (by selecting the NikonView Control window **Mount Camera PC-Cards using NikonView** check box when mounting the camera), you can use the same operations as when browsing the camera's memory card. See the preceding section,

“Browsing Image Files From Your Camera.” 

- 2 Drag the **DCIM** folder icon over the **NikonView Browser** icon and release the mouse button. (Folder names on the flash-memory card vary depending on which model COOLPIX digital camera you are using.)



The folders on the card are displayed.



NikonView Browser may be found in the path (Installation Disk) > (Installation Folder) > Nikon Software > Nikon View > Nikon View Browser.



- 3 Double-click the folder icon that you want to browse.
The browser window will open, showing thumbnail previews of the image files in the selected folder.



Another way of starting Nikon View Browser

You can also start Nikon View Browser by double-clicking the **Nikon View Browser** icon.

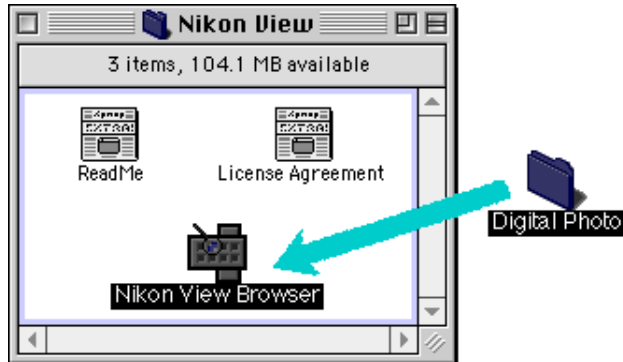


A dialog will appear prompting you to select a folder to browse.
Navigate to the desired folder and click **Select**.

If you copy the **Browse Thumbnails** icon from the camera folder to a folder containing image files, you can start Nikon View Browser by double-clicking the copy of the **Browse Thumbnails** icon.

Browsing Image Files on Disk

NikonView Browser can also be used to browse JPEG, TIFF or QuickTime image files on disk. Select the folder containing the image files you wish to browse, drag it over the **Nikon View Browser** icon and release the mouse button.



The browser window will open, showing thumbnail previews of the image files in the selected folder.



NikonView Browser may be found in the path (Installation Disk) > (Installation Folder) > Nikon Software > Nikon View > Nikon View Browser.

You can rename image files while browsing the PC card or the hard disk.

You can select image files using the **tab** key or the arrow keys.

Another way of starting Nikon View Browser

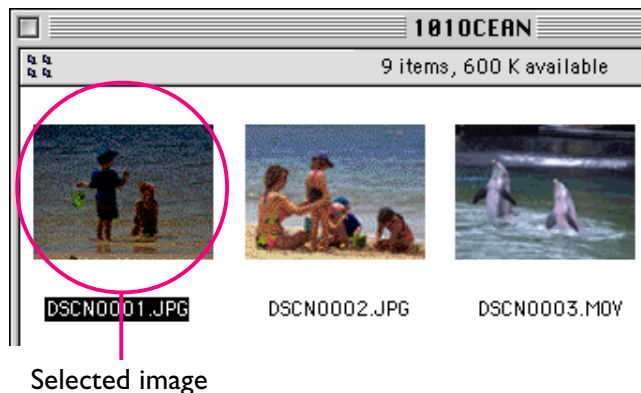
NikonView Browser can also be started by double-clicking the **Nikon View Browser** icon.



A dialog will appear prompting you to select a folder to browse. Choose the desired folder, and then click **Select**.

Selecting Image Files

Thumbnail images displayed in the browser window can be printed or copied to disk. The image files on which such operations are to be performed can be selected by clicking the thumbnail image you wish to use. Selected image files are highlighted.



Multiple image files can be selected by holding down the **shift** key on the keyboard while clicking each thumbnail in turn. All image files in the camera's memory card can be selected by choosing **Select All** from the **Edit** menu.

If you copy the **Browse Thumbnails** icon from the camera folder to a folder containing image files, you can start NikonView Browser by double-clicking the copy of the **Browse Thumbnails** icon.

Viewing Photographs with the Built-in Viewer

Photographs (JPEG and TIFF format files) previewed in Nikon View Browser can be viewed at full resolution using the browser's built-in viewer. The viewer also offers zoom-in, zoom-out, and scroll functions.

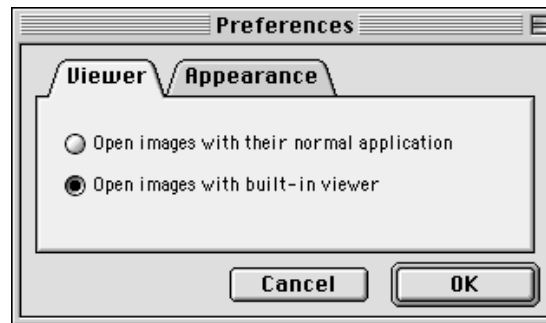
Follow these steps to view photographs with the browser's built-in viewer.

- 1 To select the built-in viewer as the application used when opening photographs from the browser, choose **Preferences...** from the browser's **Edit** menu.

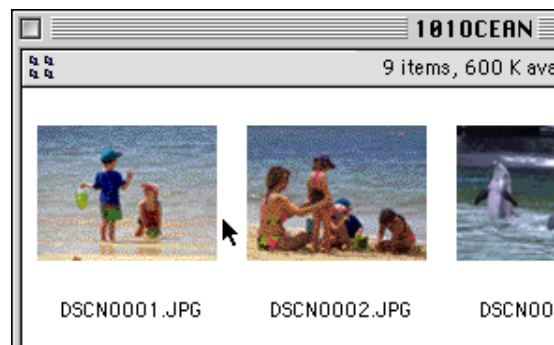


The Preferences dialog will appear.

Click the **Viewer** tab to open the Viewer panel. Select **Open images with built-in viewer** and click **OK**.



- 2 In the browser window, select the photographs you wish to view and double click any of the photographs or choose **Open** from the **File** menu to start the built-in viewer.



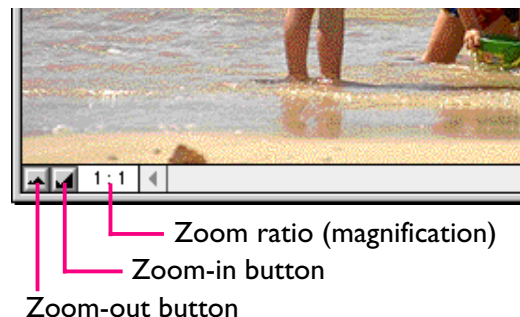
The selected photographs will be opened at full resolution, each in a separate image window.



Zooming the photographs in and out

When moved over an image window with the **command** (⌘) key held down, the cursor takes the shape of a magnifying glass (🔍). Click anywhere on the image with the **command** (⌘) key held down to zoom the photograph in. Pressing the **option** key on the keyboard changes the cursor to a magnifying glass containing a minus sign (🔍-). Clicking anywhere on the image while holding down the **option** key will zoom the image out.

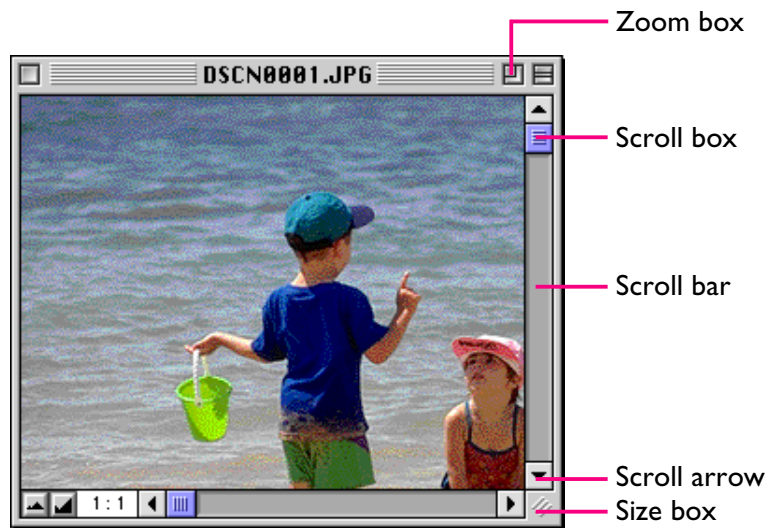
The photograph can also be zoomed in and out by clicking the zoom-in and zoom-out buttons in the lower left corner of the image window. Clicking the zoom-out button reduces the size of the window to fit the image. Clicking the zoom-in button enlarges the window to fit the image.



Zoom operations have no effect on the thumbnails in the browser window.

Scrolling and resizing image windows

When the entire photograph does not fit in the image window, you can view hidden portions by dragging the scroll boxes at the right and bottom of the image window, or by clicking the scroll bars or scroll arrows. If you move the cursor over the photograph, the cursor will take the shape of a hand (☞), and the photograph can be scrolled by dragging it.



Alternatively, you can enlarge the image window itself dragging the size box at its lower right corner.

If there is enough space on the desktop, the entire photograph can be viewed at its current zoom ratio by clicking the zoom box at the top right corner of the image window. The image window will be either enlarged to show the entire image or, if the image is larger than the desktop, enlarged to fill the desktop.

Playing Movies

Movies thumbnails (QuickTime format files) displayed in Nikon View Browser can be played back using QuickTime Player. In the thumbnail view of the browser window, only the first frame of a movie file will be displayed.

Playing movies with QuickTime Player

Double-click the thumbnail of the movie file you wish to play.



Once transfer is complete, the movie is opened in a movie window in QuickTime Player.



If you double-click ".MOV" format files, the host application is QuickTime Player regardless of Nikon View Control settings. If QuickTime Player is not installed, a dialog box will open and ask you for a substitute application to be used. If you don't already have QuickTime Player installed, you can install it from the Nikon View Ver.3 CD.

Deleting Image Files

When browsing image files on disk or on a compact flash-memory card, you can delete image files by moving their associated thumbnails to the Trash.

Image files can be moved to the Trash by dragging their associated thumbnails over the **Trash** icon and releasing the mouse button.

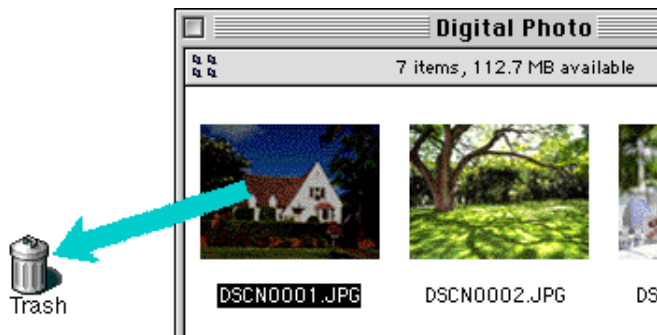
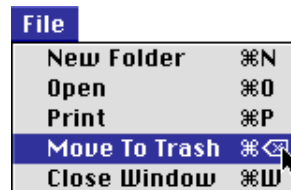


Image files can also be moved to the Trash by selecting their thumbnails in the browser window and choosing **Move To Trash** from the **File** menu.



To permanently delete the image files, select **Empty Trash** from the **Special** menu.

When image files in the camera are dropped into the Trash, an alert dialog will appear. If you click **OK**, the image file will be permanently deleted without being stored temporarily in the Trash. Image files can be permanently deleted in this way, so be sure to verify the image file being deleted before carrying out this step.

When you select **Move To Trash**, and you are sure that you want to delete the image file(s) from the camera, click **OK** in the alert dialog.

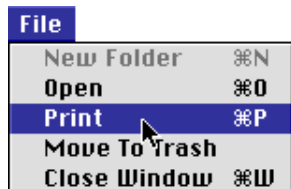


Printing Photographs

Photographs selected in the browser window can be printed by choosing the **Print** command from the **File** menu. Photographs displayed in the built-in viewer can also be printed from the image window as described below.

Printing photographs from the browser window

To print photographs, select the associated thumbnail(s) and choose **Print** from the **File** menu.



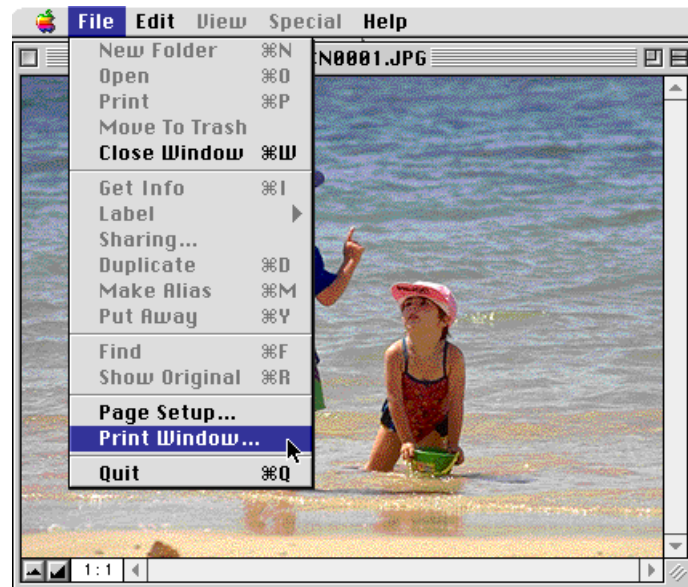
If you are opening photographs currently stored in, or that have been copied from the camera's memory card, the application specified in the Nikon View Control window will start and the Print dialog will be displayed. Make such changes to printer settings as are necessary and print the photographs.



In order to open image files in compact flash-memory cards, you will need to use Macintosh PC Exchange or a similar control panel to associate the DOS file suffix (extension) ".JPG" or ".TIF" with a suitable application. See "Nikon View Browser: Opening Image Files in Another Application".

Printing from the image window

Photographs displayed in image windows in the built-in viewer can be printed by selecting **Print Window...** from the **File** menu.



The print dialog box for the printer currently selected in the Chooser will be displayed. Print the image after adjusting printer settings. If multiple image windows are open, only the image in the currently active window will be printed.



Changing the Appearance of Thumbnails

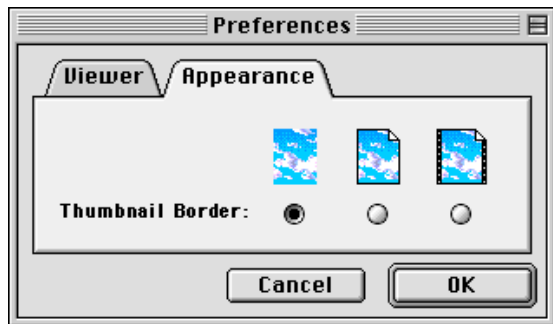
By default, thumbnail previews in the browser window are displayed in the “No border” style frame. You can choose to display image files in a document-style frame or with no frame at all.

- 1 Select **Preferences...** from the **Edit** menu.



The Preferences dialog will be displayed.

- 2 Click the **Appearance** tab to open the Appearance panel.



- 3 Choose a frame from the list of **Thumbnail Border** radio buttons.



(No border)

When this button is selected, thumbnails will be displayed without a frame.



(Document border)

When this button is selected, thumbnails will be displayed in a document-style frame, as shown at right.



(Film-strip border)

When this button is selected, thumbnails will be displayed in a film-strip frame.

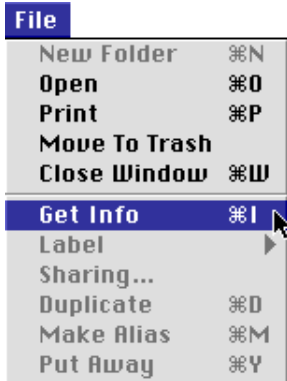


- 4 After choosing the desired style, click **OK**.

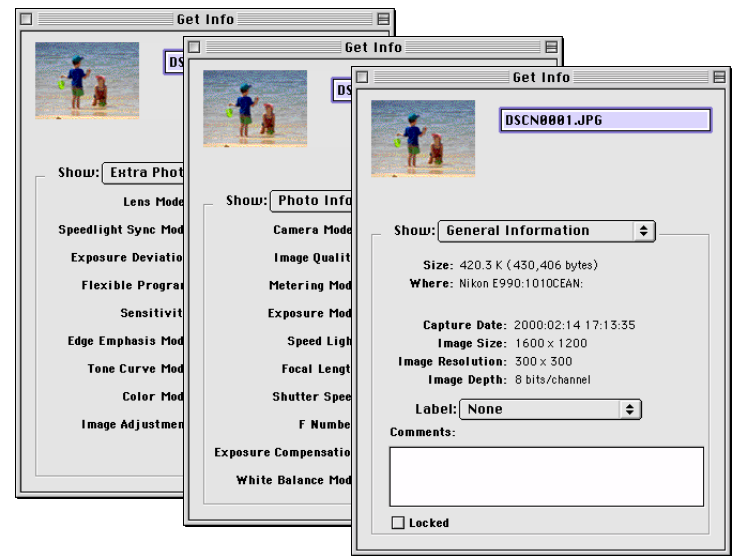
The thumbnails in the browser window will be displayed in the selected frame.

Viewing Image File Information

You can view information on selected image files. After selecting the thumbnails, select **Get Info** from the **File** menu.



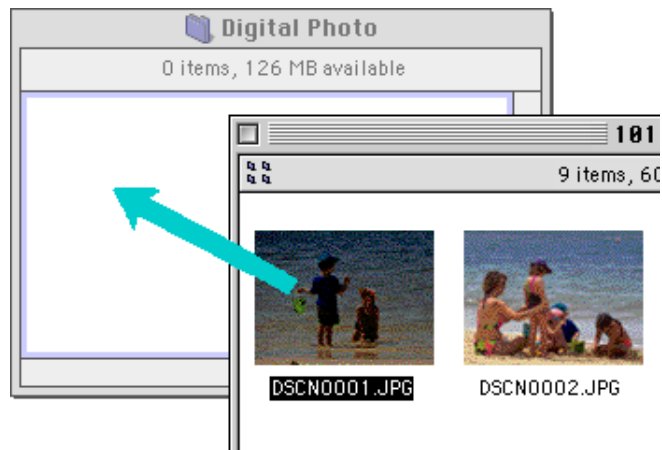
A window with information on the selected image file appears. You can find general information, photo information and extra photo information in the Get Info window. You can switch between the three by using the **Show** pop-up menu.



General Information includes file size, file location, capture date, and dimensions of the selected photograph or movie. Further, you can add comments in the **Comments** box. Photo Information contains information on camera settings such as camera model, image quality and metering mode at the time the photograph was taken. Extra Photo Information contains camera control settings information such as exposure deviation, sensitivity and tone curves. The Photo Information and Extra Photo Information panels are not available for movie files.

Copying Image Files to Disk

Selected image files in the browser window can be copied to disk by dragging any of the selected thumbnails over the destination folder and releasing the mouse button.



Because the camera functions as a “read-only” drive, image files can only be copied, not moved, even when the **option** key is not held down.



All image files recorded with the camera are assigned file names of the form “DSCN_nnnn.xyz,” where “nnnn” is a four-digit file number and “xyz” is a three-letter extension (“JPG”, “TIF”, or “MOV”). Similarly, all image files saved in folders in the camera’s memory card are assigned file names of the same type. To prevent image files already copied to disk from being overwritten, change the filename after copying an image file, or create a new folder for each folder on the camera.



Opening Image Files in Another Application

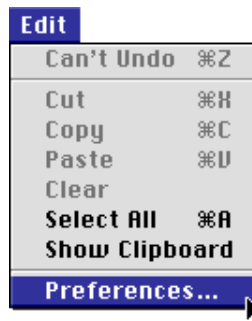
When a thumbnail is double-clicked or a thumbnail is selected and **Open** chosen from the browser **File** menu, the image file will be opened in the application specified in the Nikon View Control window's, Settings panel. Image files can also be opened directly from any application that supports the file formats used by the camera.

When image files are read directly from the camera, the creator program is set to the application specified in the Nikon View Control window. If the specified application is installed on your system, double-clicking image files in the camera's memory card will open them in the application. When read directly from the camera's flash-memory card, however, image files are treated as DOS files with no creator. In order to open such image files with a double click, you will need to use Macintosh PC Exchange or a similar control panel to associate the DOS file suffix (extension) ".JPG", ".TIF" or ".MOV" with a suitable application. The same restriction applies to image files copied directly from flash-memory cards.

Opening selected photographs from the browser

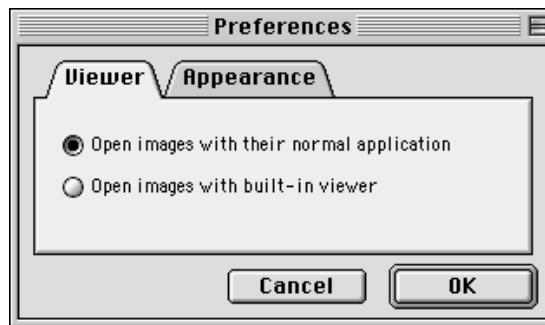
Follow these steps to open photographs with the assigned application.

- To choose settings so that photographs are opened using the designated application, choose **Preferences...** from the browser's **Edit** menu.

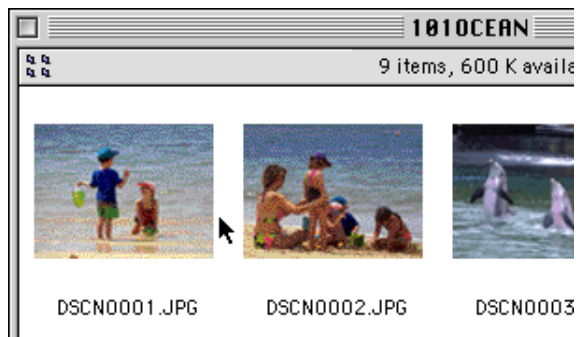


The Preferences dialog will appear.

Click the **Viewer** tab to open the Viewer panel. Select **Open images with their normal application** and click **OK**.



- 2 In the browser window, select the photographs you wish to open by clicking their thumbnails, then double-click any of the selected thumbnails or choose **Open** from the **File** menu.



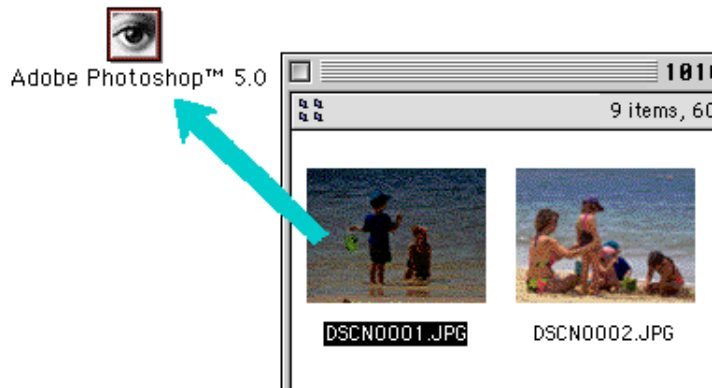
The selected photographs will be opened in windows within the host application.



The application used to open photographs is the one that you selected in the Nikon View Control window's Settings panel when you mounted the camera. If you selected the default, Nikon View Browser, it will start, and you can view photographs at full resolution. If you chose another application, that application will start, and open the photographs. If the specified application is not installed when you attempt to open an image file, a dialog will appear prompting you to choose the application to be used. Choose a suitable application from the dialog box. To view photographs, the application must support JPEG and/or TIFF formats. If you double-click ".MOV" format files, the host application is QuickTime Player regardless of Nikon View Control settings.

Opening selected image files by drag-and-drop

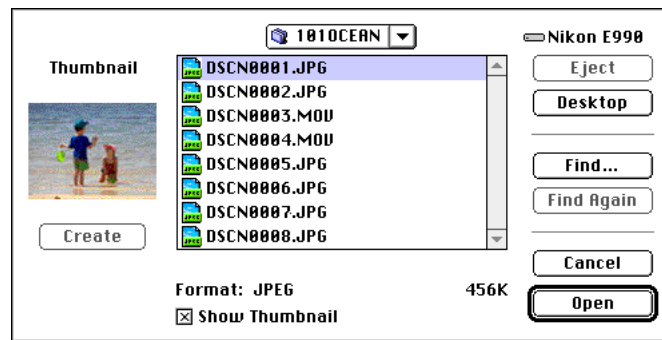
Selected image files can be opened in any application that supports the file formats used by the camera by dragging their thumbnails over the application's icon or alias and releasing the mouse button.



The application will start and the selected image files will be opened in windows within the host application.

Opening image files from an application's Open dialog

Image files in the camera can be opened from any application that supports the file formats used by the camera (JPEG, TIFF or QuickTime) by choosing the open command from the host application's **File** menu. In the Open dialog, navigate to the Desktop, select the camera drive, and click the **Open** button. The folders in the camera's memory card are displayed; choose the one you want and click the **Open** button. The image files in the selected folder will be listed. If the host application's Open dialog supports preview display, a preview of the image file currently selected will appear in the dialog box.



Select the image file you wish to open and click the **Open** button to open the image file in the host application.

Previews are only displayed in the Open dialog box if the **Create Thumbnails** item in the Nikon View Control window was checked when the camera was mounted.

This chapter provides a brief reference guide to Nikon View's windows and menus. Refer to this guide when you want to know the meaning of a command.

The Nikon View Control Strip Item

The Browser Window



Nikon View Control Strip Item

(for modem/printer connection only)

If Nikon View Ver.3's serial drivers have been installed, a Nikon View item has been added to the Macintosh control strip (if your system doesn't support the control strip, you will not be able use this function). This item can be used for easy access to such operations as mounting and unmounting the camera when connected to the modem or printer port.



The functions of the Nikon View control-strip item are described below.

when the camera is not mounted:



when the camera is mounted:



Open Nikon View Control

Opens the Nikon View Control window, which can be used to mount or unmount the camera when connected to the modem or printer port. You can also make changes to such options as connection port (modem or printer) and port speed.

Mount Camera Now

Mount the camera currently connected to the computer's modem or printer port.

Unmount Camera Now

Remove a currently mounted camera connected to the computer's modem or printer port from the desktop.

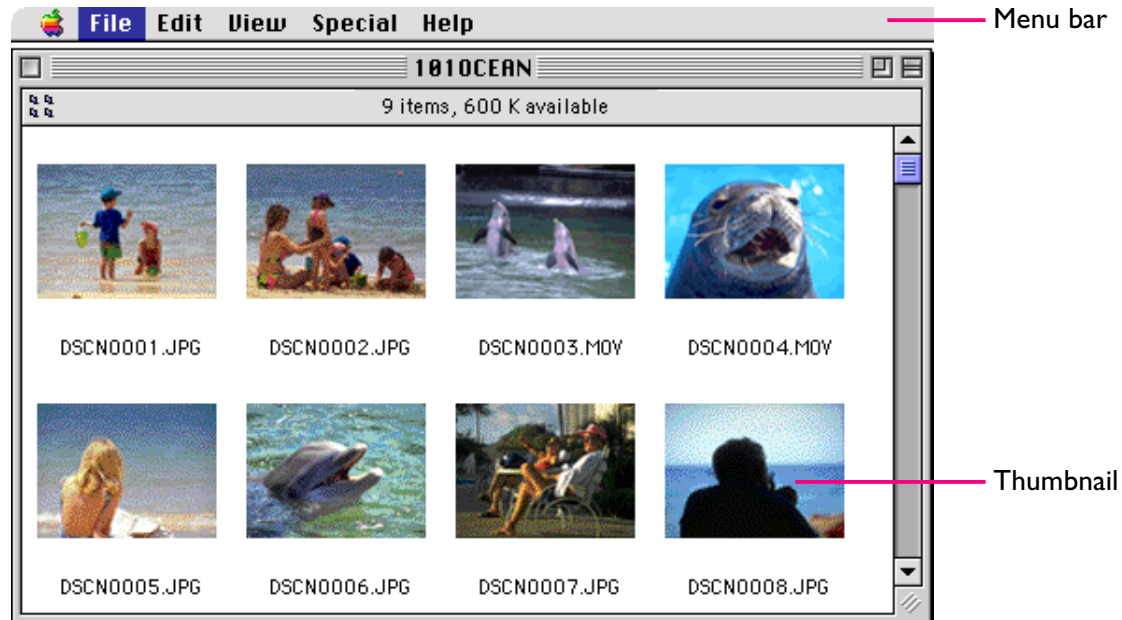


If your Mac OS supports the control strip, but it is not visible on the desktop, it can be displayed by choosing **Control Strip** from the **Control Panels** submenu of the Apple menu and selecting the **Show Control Strip** radio button.



The Browser Window

This is the Nikon View Browser window. The browser window displays thumbnail previews of image files stored in compact flash-memory cards read from the camera or a card reader, or on disk. Image files can be opened by double-clicking a thumbnail, or image files can be copied to disk using a drag-and-drop operation. Window operations are detailed in the section, “Nikon View Browser”.



For more information on:

Nikon View Browser 



You can select image files using the **tab** key or the arrow keys.

The Menus



The menus in the menu bar allow you to manage image files stored in the camera's memory card or on disk. The commands available in each menu are outlined below. A more complete description of the tasks that may be performed using the menu commands may be found in the chapter, "Nikon View Browser".

The Apple Menu (🍏)

In addition to the usual Apple menu items, the Apple menu contains an **About Nikon View Browser...** option when the browser window is active.



About Nikon View Browser...

Gives copyright information for Nikon View Browser. Click anywhere within the About dialog box to clear it from the screen.

The File Menu



New Folder (⌘N)

Creates a new folder. Note however that as the camera functions as a "read-only" disk, this command is not available in the camera window.

Open (⌘O)

Opens selected image files in the built-in viewer or in a host application, depending on the settings chosen in the Preferences dialog box.



Print (⌘P)

Selected still image files will be opened in the host application, and the application's Print dialog will be opened, allowing you to determine printer settings and print the image.

Move To Trash

Moves selected image files to the Trash. If this command is used for image files in the camera's memory card, an alert dialog will be displayed.

Close Window (⌘W)

Closes the browser window. Clicking the close box at the left end of the title bar has the same effect. Closing all browser windows ends your current session of Nikon View Browser.

Get Info (⌘I)

Displays information on the selected image file.

Label

Changes the label for selected image files.

Sharing...

This command can not be selected from the browser window.

Duplicate (⌘D)

Creates copies of the selected files or folders. Note, however, that as the camera functions as a "read-only" disk, this command is not available for image files stored in the camera's memory card.

Make Alias (⌘M)

Creates an alias for the selected files or folders. Note, however, that as the camera functions as a "read-only" disk, this command is not available for image files stored in the camera's memory card.

Put Away (⌘Y)

Returns files that have been placed on the desktop to the browser window. This command can be used when you have selected items on the desktop in the Finder. Note, however, that as the camera functions as a "read-only" disk, this command is not available for image files stored in the camera's memory card.

Find (⌘F)

Displays Find File dialog box.

Show Original (⌘R)

This command can not be selected from the browser window.



Page Setup...

Brings up a dialog box which allows you to change printer settings such as paper size and orientation.

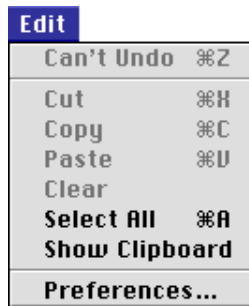
Print Window...

Prints the active window.

Quit (⌘ Q)

Closes browser windows and ends your current session of Nikon View Browser.

The Edit Menu



Can't Undo (⌘Z)

Cut (⌘X) / Copy (⌘C) / Paste (⌘V) / Clear

These commands are not available from the browser window.

Select All (⌘A)

Selects all the image files in the browser window for copying, printing, or deletion.

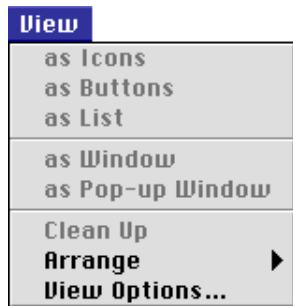
Show Clipboard

Displays the contents of the clipboard.

Preferences...

Opens the Preferences dialog box, where you can choose whether to open image files in the built-in browser or in another application. You can also set the appearance of the thumbnails in the browser window.

The View Menu



as **I**cons/as **B**uttons/as **L**ist

as **W**indow/as **P**op-up **W**indow/**C**lean **U**p

These commands can not be accessed from the browser window.

Arrange

Orders the thumbnails displayed in the browser window by name, date modified, date created, size, kind, or label.

View Options...

Opens the View Options dialog for the browser window.

The Special Menu



Empty Trash...

Deletes all items in the Trash.

Eject Disk

This command is not available from the browser window.

Erase Disk...

This command is not available from the browser window.

Sleep

Puts the system into sleep mode. Normal operation can be restored by pressing any key on the keyboard.

Restart

Ends the current session of Nikon View Browser and any other open applications and restarts the system.

Shut Down

Ends the current session of Nikon View Browser and any other open applications and turns off the computer.

The Help Menu



About Balloon Help...

Provides an explanation of the Finder's "Balloon Help" function.

Show Balloons/Hide Balloons

Turns Balloon Help on or off.